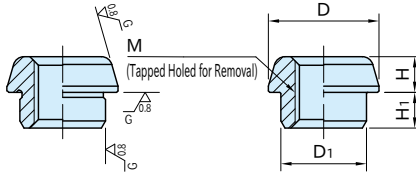


CP157

TAPERED BUSHINGS



Body
S45C steel
Black oxide finished
Precision ground (only for Accurate type)

CP157-L

(Accurate)

CP157-S

(Standard)

CP157-L

(Accurate)

CP157-S

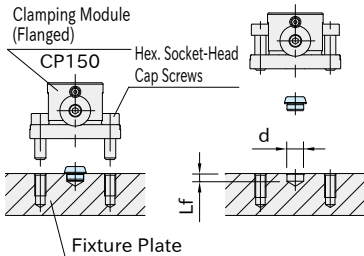
(Standard)

Accurate		Standard		D	H	H ₁	M	Weight (g)	CLAMPING MODULES
Part Number	D ₁ (g6)	Part Number	D ₁ (-0.02/-0.05)						
CP157-06001L	8	CP157-06001S	8	11.5	4	5	M 6×1	4	CP150-06025
CP157-08001L	12	CP157-08001S	12	15.5	5	5	M 8×1.25	8	CP150-08040, CP160-08040*
CP157-12001L	18	CP157-12001S	18	24.5	8	6	M12×1.75	27	CP150-12063, CP160-12063*
CP157-16001L	22	CP157-16001S	22	31.5	10	7.5	M16×2	51	CP150-16080, CP160-16080*
CP157-20001L	30	CP157-20001S	30	44.2	13	7.5	M20×2.5	134	CP150-20100

How To Use

- Can be used for mounting **CP150** Clamping Module (Flanged) on the fixture plate.
- Use Accurate Type for precise locating of a clamping module.
- Use Standard Type for rough locating of a clamping module.

Mounting-Hole Dimension



Size	d (H7)	Lf
06001	8	5.5
08001	12	5.5
12001	18	6.5
16001	22	8
20001	30	8

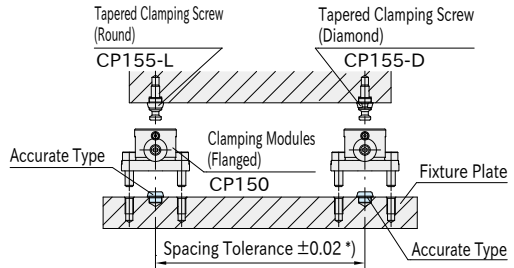
Note: The tolerance of dimension "d" for Standard Type should be $^{+0.1}_0$.

Related Product

- **CP150** Clamping Modules (Flanged)
- **CP155-L** Tapered Clamping Screws
- **CP155-D** Tapered Clamping Screws
- **CP156** Clamping Screws
- **CP160** Clamping Modules (Hook)

Spacing Tolerance

Spacing tolerance for Accurate Type should be ± 0.02 .
*) Spacing tolerance for Standard Type should be ± 0.1 .



Application Example

