

Ball Drive System NC Rotary Table

Basic model

Standard type

RG

RG-160·250·320

The new technology, Tsudakoma Ball Drive System is adopted.

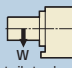

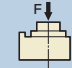
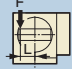
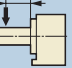
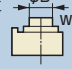
It enables high indexing speed which is two times faster than conventional model and super productivity with top quality thanks to no backlash and high rigidity.



RG-160

Specifications

Unit: mm

		RG-160	RG-250	RG-320	
RBA-K RNCK	Handedness	R ○	○	○	
		L —	—	—	
RCH RNC	Spindle diameter	φ100	φ140	φ180	
RCV RNCV	Table diameter *1	φ160 or φ200 (Option)	φ250 (Option)	φ320 (Option)	
Multi-Spindle RN-N	Center height	160	210	255	
RZ	Center bore	Nose diameter	φ55H7x45	φ80H7x45	φ115H7x45
		Through-bore	φ40	φ50	φ85
TN	Table T-slot width *1	12H8	12H8	14H8	
	Guide block width	14h7	18h7	18h7	
TTNC	Servo motors (for FANUC)	αiF4	αiF8	αiF12	
	Inertia converted into motor shaft ×10 ⁻³ kg·m ²	0.19	0.42	2.24	
THNC	Net weight	60	110	210	
	Speed reduction ratio	1/36	1/36	1/36	
Multi-Spindle TTNC-N	Table max. rpm (Motor rpm: 3,000min ⁻¹)	83.3	83.3	83.3	
RC RH	Indexing accuracy (the sum)	15	15	15	
	Repeatability	4	4	4	
RUA	Clamp system	Pneumatic	Pneumatic	Pneumatic	
	Clamp torque /pneumatic pressure 0.49MPa	N·m	500	1,000	1,500
RTV RTT	Allowable work weight	Vertical setting  kg	100 (200)	125 (250)	175 (350)
		Horizontal setting  kg	200	250	350
Options	Allowable load (when table is clamped)	F  N	10,800	14,400	24,800
		F×L  N·m	500	1,000	1,500
Technical Information	Allowable work inertia	F×L  N·m	780	1,900	4,700
		$J = \frac{W \cdot D^2}{8}$  kg·m ²	0.48	1.95	4.48

☞ Servo motors of other manufacturers **P.70**

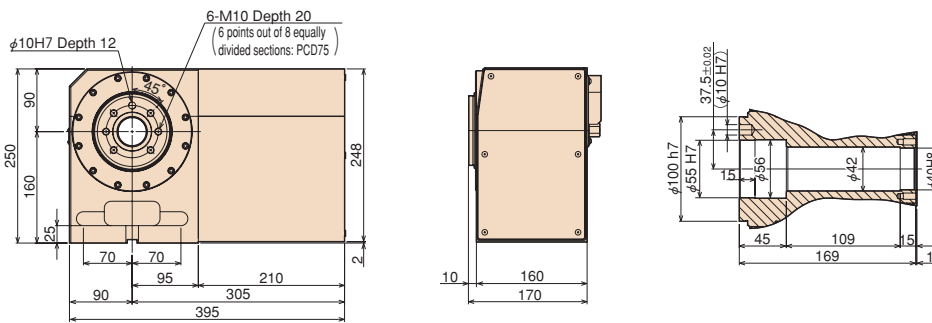
☞ When assembling a faceplate or a fixture with the main spindle **P.80**

*1 The tolerance of the table T-slot width is applicable to four standard slots arranged crosswise. ☞ Dimensions **P.64**

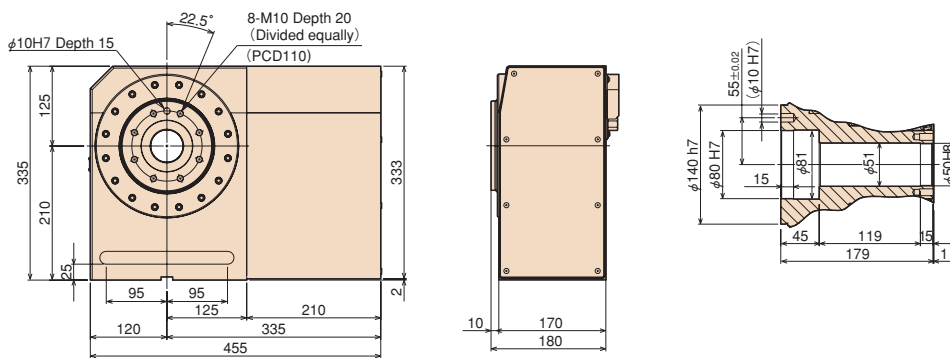
Dimensions

Unit: mm

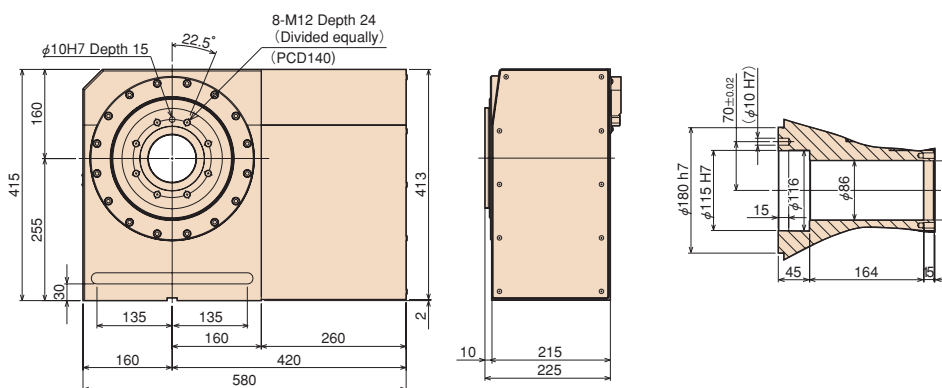
RG-160R



RG-250



RG-320



Note: The above dimensions are for FANUC servo motors. The dimensions of servo motors of other manufacturers may be larger.

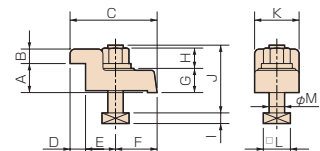
Clamping block and bolt

Unit: mm

	Q'ty	T-slot pitch	T-slot width	A	B	C	D	E	F	G	H	I	J	K	L	M
RG-160	2	-	14	-	-	-	-	-	-	-	17	8	60	-	23	12
RG-250	4	40~120	18	25	12	80	12	33	35	22	21	11	65	40	28	16
RG-320	4	55~147	18	30	15	90	16	31	43	25	21	11	70	46	28	16

Note 1: When using a machine with a T-slot pitch other than the above, use suitable clamping blocks and bolts that are available on the market, or order custom-made ones from TSUDAKOMA. (Optional)

Type I



RG

RNA
RN

RNE

RNA-B
RNCV-B

RNCM

RBA

RBA-K
RNCK

RCH
RNC

RCV
RNCV

Multi-Spindle
RN-N

RZ

TN

TTNC

THNC

Multi-Spindle
TTNC-N

RC
RH

RUA

TSUA

RTV
RTT

NC Controllers

Accessories

Options

Technical
Information